

# Supportive Living Program

## Program Outcomes (FY 2013– FY2015)



At the Supportive Living Program, our mission is to provide holistic programming that helps individuals with HIV/ AIDS achieve **self-sufficiency** in order to function **independently** in the community.

Our programming includes stable housing and services that enhance physical, intellectual, emotional and spiritual health, strengthen sobriety and promote responsible financial management.

### Demographics

#### Gender

Male	78%
Female	17%
Transgender	5%

#### Race/Ethnicity

African-American	86%
White/ Caucasian	6%
Hispanic	8%

#### Age

19-29	19%
30-39	31%
40-49	19%
50-59	28%
60+	3%

**36**  
Clients Served at  
SLP 2013 - 2015

**58%**  
With Substance Use  
Diagnosis

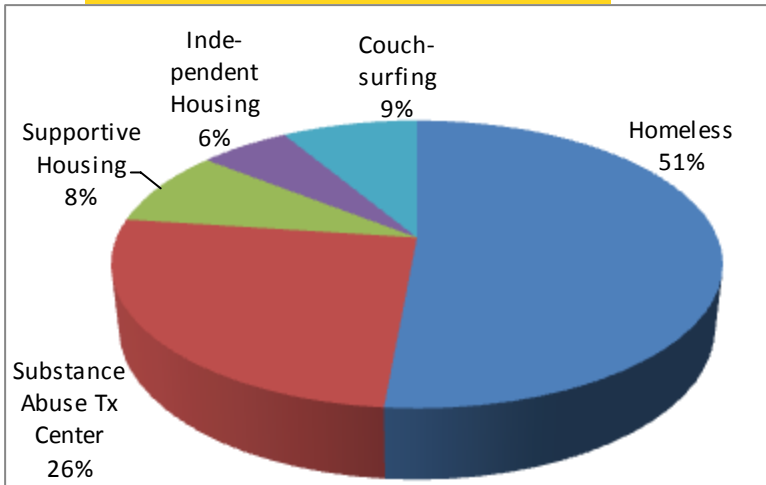
**61%**  
With Mental Health  
Diagnosis

**86%**  
Discharged to  
Stable Housing

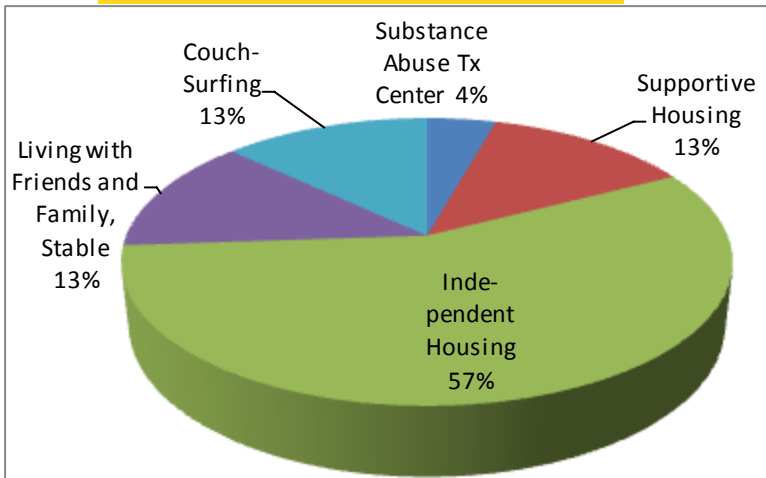
#### Sexual Orientation

Gay 36%    Heterosexual 50%    Bisexual 11%    Other 3%

### Housing Status at Entry



### Housing Status at Discharge



### Income

**33%**  
Had Income  
at Entry



**57%**  
Had Income  
at Discharge

**52%**  
Increased Their Income in  
the Program

### Employment

**8%**  
of Clients were Employed at  
Entry



**36%**  
Gained Employment in the  
Program

“The SLP provided me with a safe place to work on the important things I needed to work on, like my health and mental health, without having to worry about where I was going to sleep every night.”

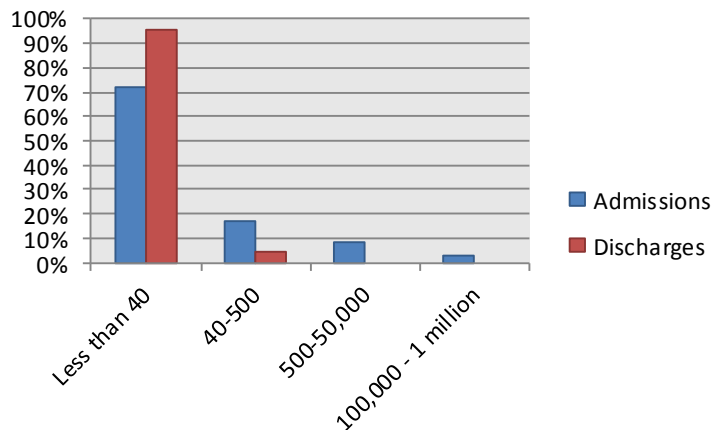
**31% of Clients Enrolled in an Education Program while Living at SLP**



**Referrals Provided**



**Viral Load**



“The SLP has given me stability and the chance to focus on my recovery, and in doing so, I **have been drug free for the longest amount of time in my life.**”

**Clients Discharged from SLP:**

**87%**

**Were Linked to Health Insurance Coverage**

**96%**

**Had an Undetectable Viral Load**

**100%**

**Maintained HIV Medication Adherence**

For more information, please contact:

Catherine Lothspeich, LCPC, Supportive Living Program Manager

Email: [clothspeich@chicagohouse.org](mailto:clothspeich@chicagohouse.org) Phone: 773.248.5200 ext. 333